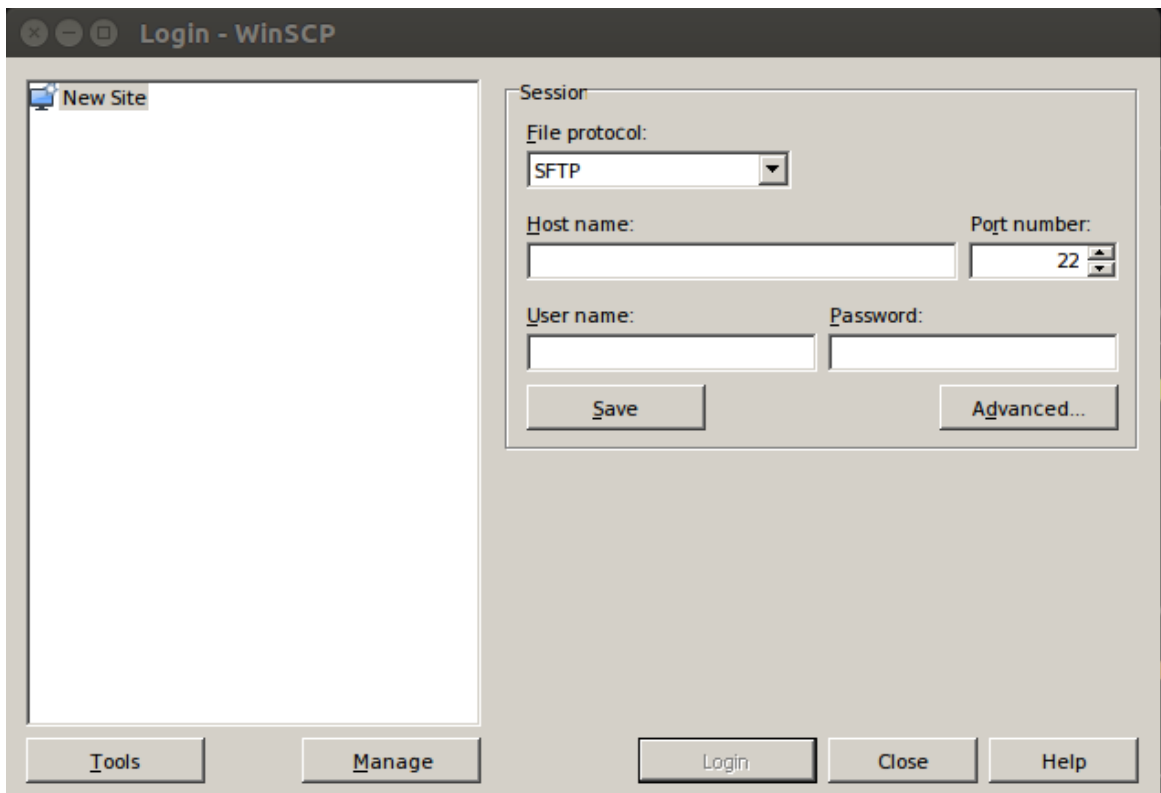


## Using WinScp to transfer files

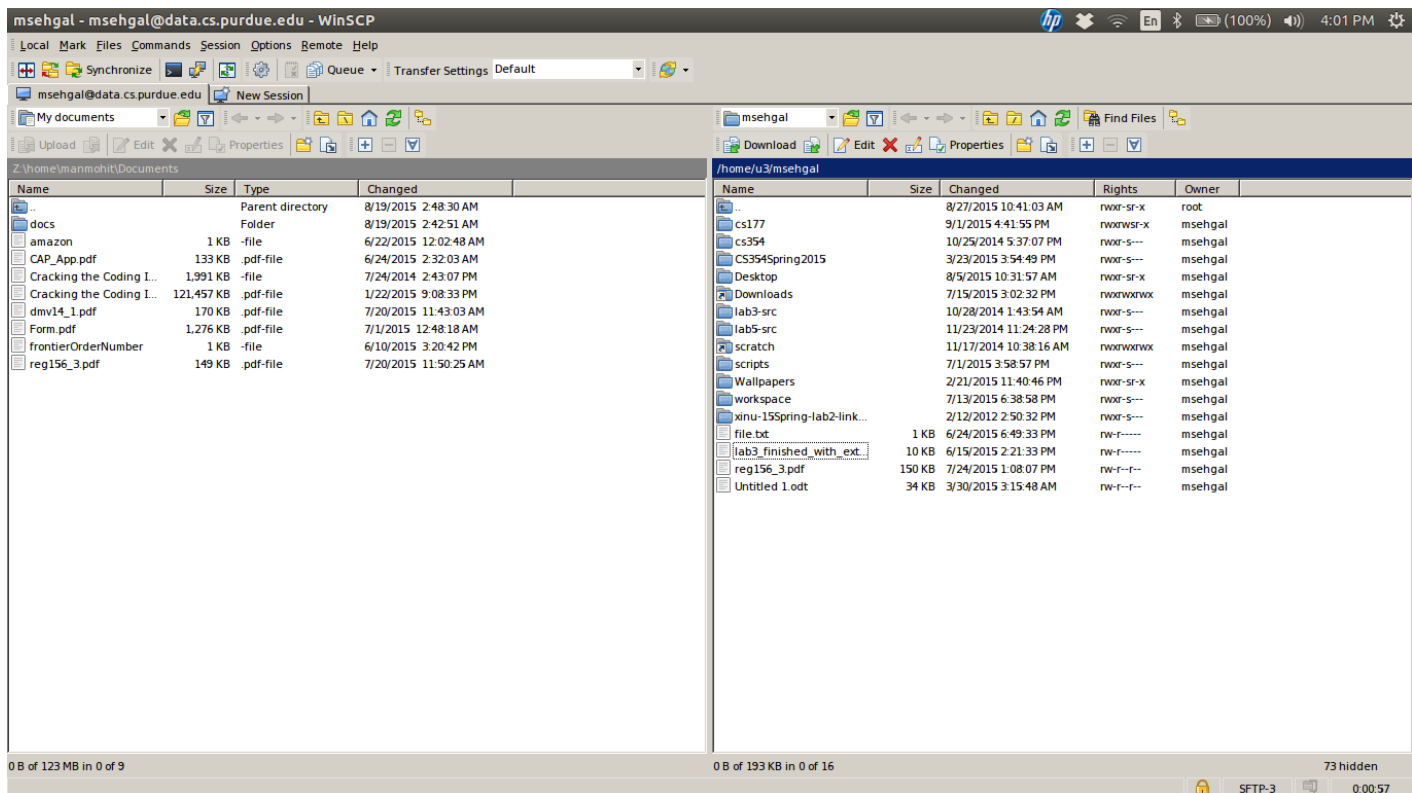
1. Download WinScp from <http://winscp.net/eng/download.php> (copy paste URL or click on the link)
2. Once you have downloaded and installed the software. Open the software. You will see a window similar to the image below.



3. Under Host put : **data.cs.purdue.edu**
4. For **username** and **password**, use your **Purdue username** and **password**. Press Enter or click Login to continue.
5. Click on "Yes" for the dialog box that appears after you hit Login.



6. Once connected, You will get a window similar to the image below.



7. The left hand side refers to the local system (your system) and the right hand side refers to university computer.

8. Navigate to your **cs177** folder on the right hand side. Open the folder and make a new folder for **project0** (if you have not made it already).

9. Next, drag and drop the files from your local system to the university computer.
10. User **Putty** to navigate and turnin your work from home. (Turn-in instructions are under lab1 task 3)
11. Email or talk to your lab TA if you face any issues.