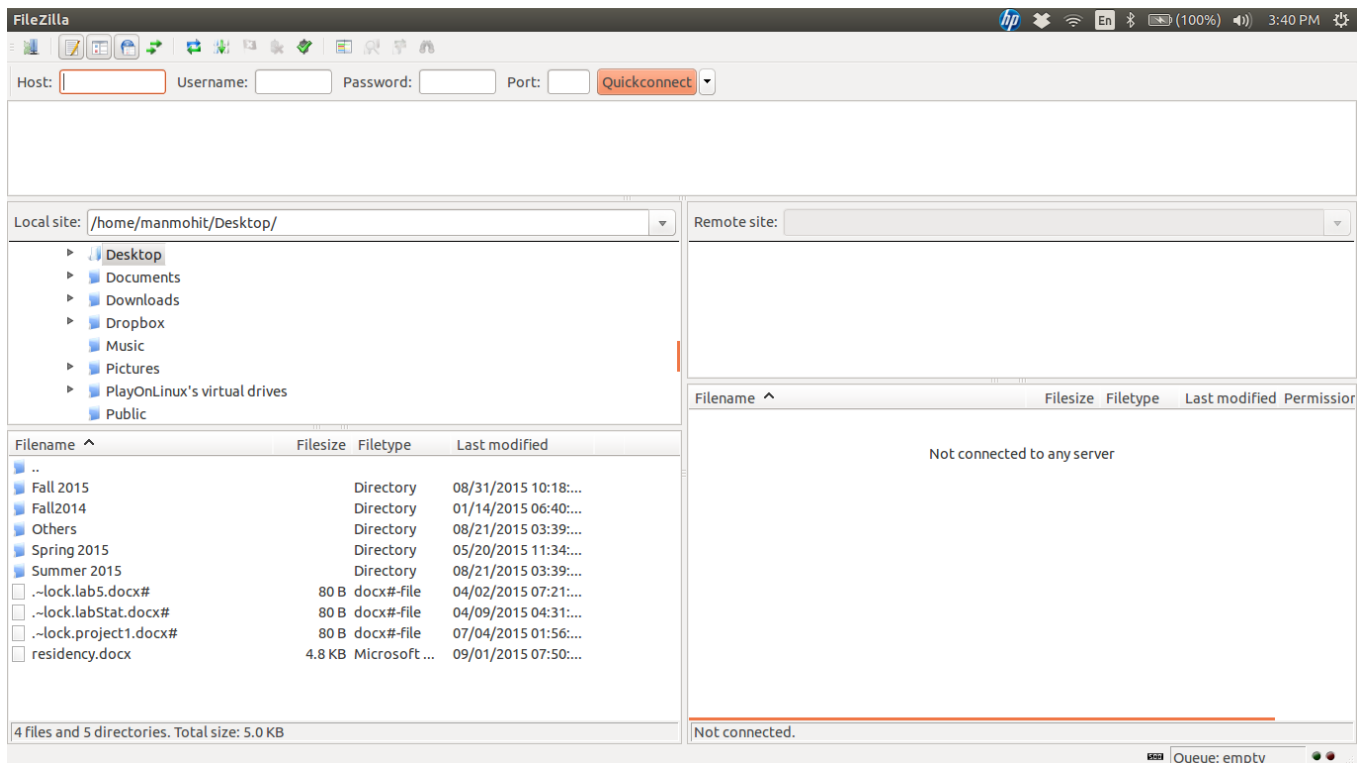
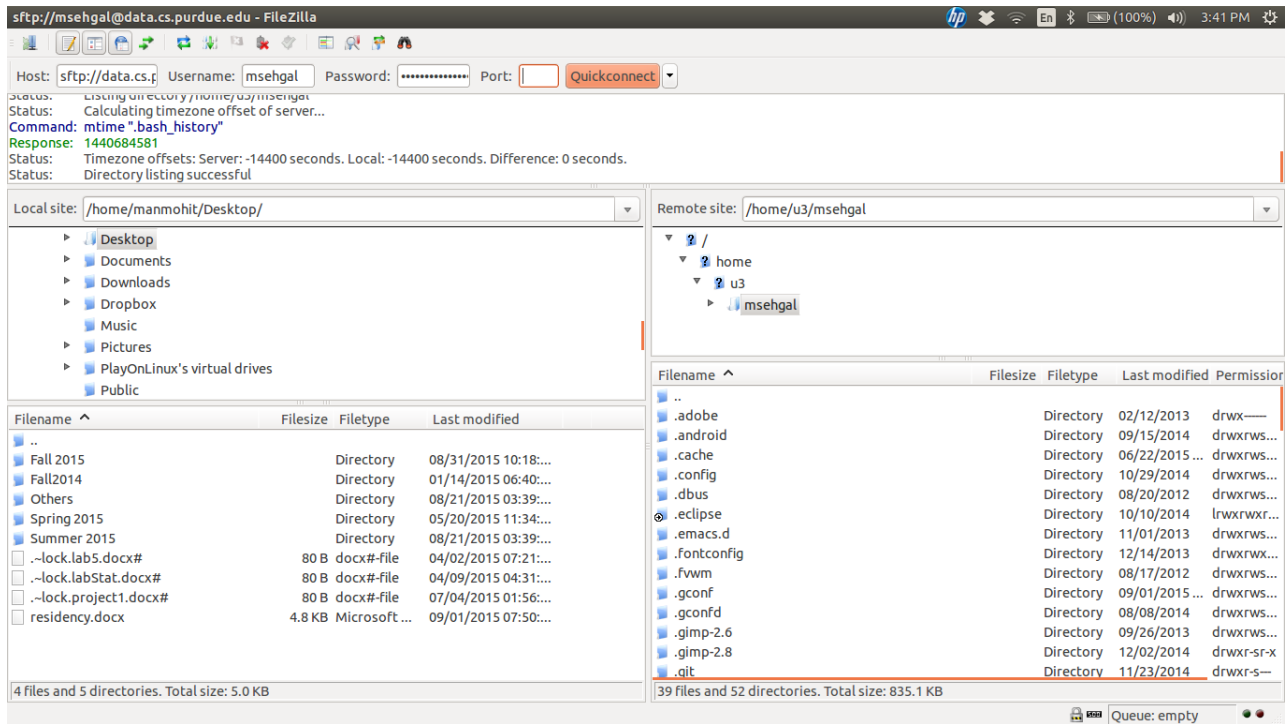


Using FileZilla to transfer files

1. Download FileZilla from <https://filezilla-project.org/> (copy paste URL or click on the link)
2. Once you have downloaded and installed the software. Open the software. You will see a window similar to the image below. The left side refers to your local desktop and the right hand side will refer to the university computer.



3. Under Host put : **data.cs.purdue.edu**
4. For **username** and **password**, use your **Purdue username** and **password**.
5. For port use the number **22**.
6. Once connected you will see a similar image below (Note: The content of your university computer will / can be different)



7. Navigate to your **cs177** folder on the right hand side. Open the folder and make a new folder for **project0** (if you have not made it already).
8. Next, drag and drop the files from your local system to the university computers
9. User **Putty** to navigate and turnin your work from home. (Turn-in instructions are under lab1 task 3)
10. Email or talk to your lab TA if you face any issues.